

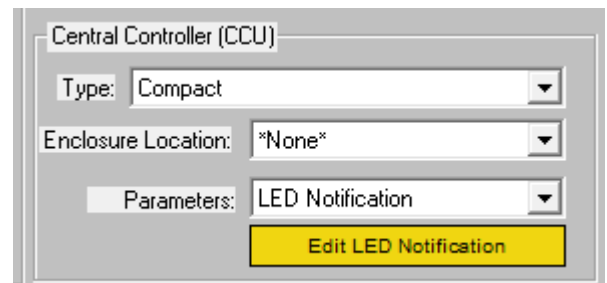


LiteTouch Compact MyAmbience Communication Setup Guide

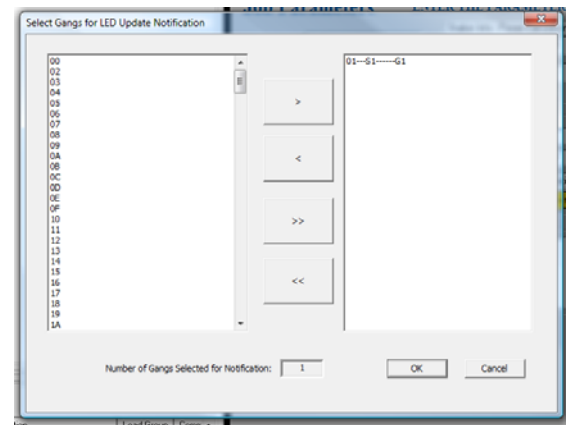
Note: Please insure that system functions independently before connecting to MyAmbience

Here are a few simple steps to ensure proper integration between MyAmbience and LiteTouch Compact systems. It should be noted that because of the limitation of the LiteTouch Compact protocol, that only keypad button press emulation is supported. Dimming is also not supported with the LiteTouch Compact.

The first step is to configure the LiteTouch Compact to report back that station LED status has changed. On the Parameters page in LiteWare, in the Central Controller section, select LED Notification from the Parameters list, and then click Edit LED Notification.



Select all of the stations that you want to monitor from the left hand box and then click the right arrow to move them to the right hand box. The stations in the right hand box will report back their status changes.



Download this new project information into your LiteTouch Compact system, and you are ready to communicate with MyAmbience.